

PRODUCT DATA SHEET

CLIPPING TOOLS FOR INSULATED CORD END TERMINALS



DESCRIPTION

Crimping Tools For Ferrule, is a handheld motion crimping tool for lanyard end ferrule terminals. This ergonomically friendly crimper is designed to provide a consistent and reliable crimp.

FEATURES

- Reduce energy by 50% when spinning.
- Lightweight and compact structure maintains the crimping effect.
- Reproducible and high crimping quality thanks to integrated lock.
- Ergonomic Handle Design provides improved gripping power.
- High quality crimping standard.

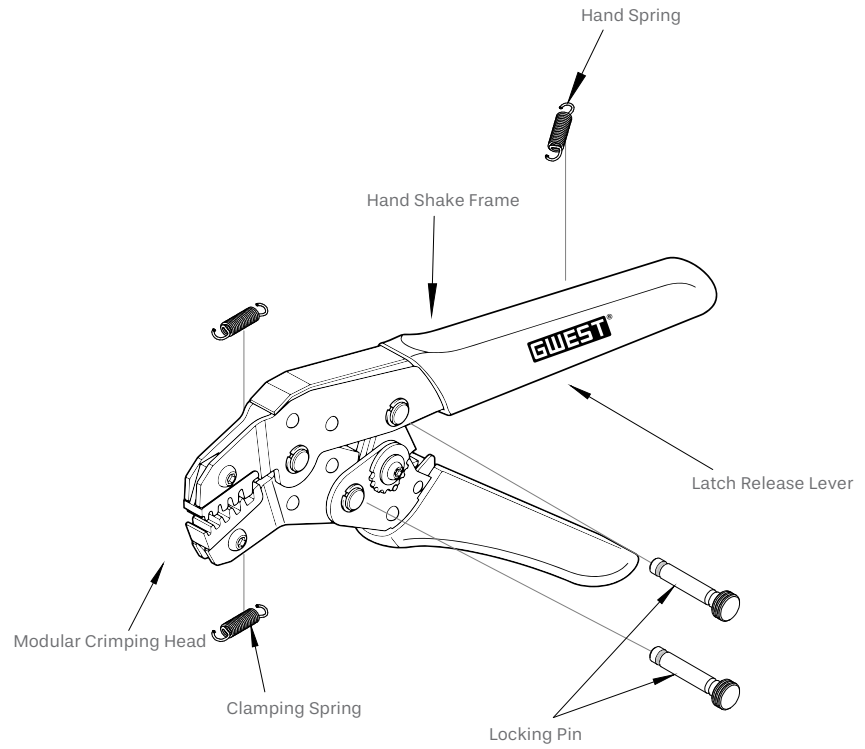
USAGE AREAS



PRODUCT DATA SHEET

CLIPPING TOOLS FOR INSULATED CORD END TERMINALS

SECTIONS AND DIMENSIONS



PRODUCT CODE	DESCRIPTION
GW - 1	0.50 - 6 mm ² Insulated Cord End Terminals Crimping Tool